

PULP CAMERAS!

BY COLIN CHAPMAN!

All entries follow this format:

MANUFACTURER

Model

Manufacture Dates

Features/Notes

Film Type (and cost), Exposure Size

Shots per roll

Cost

EASTMAN KODAK



No.2 Brownie

1901-1933

Meniscus lens, Rotary shutter.

Kodak 120 film (\$0.25), 2-1/4" x 3-1/4"

6 shots

\$2 (\$2.50 for color model, \$2.75 for Aluminum Model F)



No. 0 Brownie

1914-1935

Meniscus lens, Rotary shutter.

Kodak 127 film (\$0.30), 1-5/8" x 2-1/2"

8 shots

\$1.25



No.2A Brownie

1907-1936

Meniscus lens, Rotary shutter.

Kodak 116 film (\$0.30 or \$0.60), 2-1/2" x 4-1/4"

6 or 12 shots

\$3.00 (\$3.75 for Aluminum model, \$4 for color model)



No. 2 Folding Autographic Brownie

1915-1926

Achromatic and Rapid Rectilinear lenses, Kodex shutter.

Kodak 120 film (\$0.25), 2-1/4" x 3-1/4"

6 shots

\$10.15



Ciné Kodak Model A

1923-1925

Kodak Anastigmat 25mm f 3.5 lens. Hand-cranked. Shoots 16 frames per second.

16mm 100-ft. reel (\$7.50-\$9.00)

Recording Time 4mins 10secs

\$200 (\$335 with tripod, projector, screen, and splicer)



Ciné Kodak Model B

1925-1931

Anastigmat 25mm f/1.9 - f/16 lens.

16mm 100-ft. reel (\$7.50-\$9.00)

Recording Time 4mins 10secs

\$150.00



No. 3A Panoram

1926-1928

Takes 120-degree panoramic pictures. Has inbuilt spirit levels to ensure aligned shots.

Kodak 122 film (\$0.50, \$0.75, or \$1.25), 3-1/4" x 10-3/8"

2, 3, or 5 shots (half normal 122 options)

\$40



Vanity

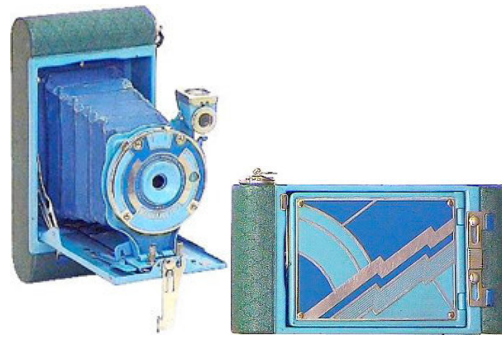
1928-1933

Version of the Vest Pocket Kodak Series III in Blue, Green, Brown, Grey, or Red.

Kodak 127 film (\$0.30), 1-3/8" x 2 1/2"

8 shots

\$30



Petite

1929-1933

Version of the Vest Pocket Kodak Model B in Blue, Green, Grey, Lavender, and Old Rose. Also available as the Kodak Ensemble in a suede covered box complete with powder compact, lipstick, rouge, mirror, and coin pocket.

Kodak 127 film (\$0.30), 1-3/8" x 2 1/2"

8 shots

\$7.50 (\$15 for the Kodak Ensemble)



Beau Brownie 2A

1930-1933

Enameled deco style by designer Walter Dorwin Teague available in Old Rose, Blue, Black/Purple, Brown/Tan, and Green. Doublet lens, Rotary shutter.

Kodak 116 film (\$0.30 or \$0.60), 2-1/4" x 4-1/4"

6 or 12 shots

\$5.25



Ciné Kodak, Model K

1930-1946

Anastigmat 25mm f/1.9 - f/16 lens.

16mm 100-ft. reel (\$7.50-\$9.00)

Recording Time 4mins 10secs

\$152.50



Pupille

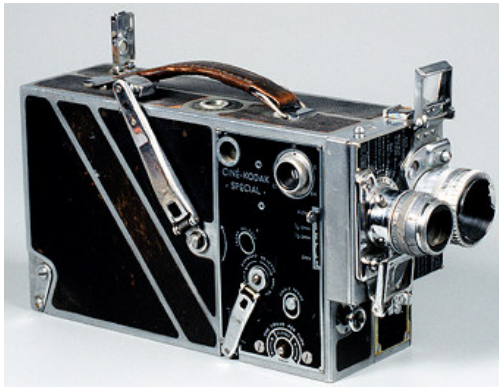
1931-1935

Jos. Schneider & Co. Kreuznach 4.5cm f/2 lens, Compur shutter, attachable Leitz-Wetzlar rangefinder.

Kodak 127 film (\$0.30), 1-5/8" x 2-1/2"

8 shots

\$75.00



Ciné Kodak Special Model

1933-48

Adjustable shutter and back-wind (permits fades, overlapping scenes, time-lapse, animation and lap-dissolves), two-lens turret (for zooms and close-ups), and variable speed from 8-64 frames per second. Kodak Anastigmat 1.9/25mm and 2.7/15mm lenses. May be hand-cranked or motor-operated.

16mm 100-ft. or 200-ft. reel (\$7.50-\$9.00 per 100-ft.)

Recording Time 4mins 10secs or 8mins 20secs

\$375



Brownie Special No. 2

1933-1934

Equipped with Doublet lens, Rotary shutter.

Kodak 120 film (\$0.25), 2-1/4" x 3-1/4"

6 shots

\$2.25



Six-16 Brownie

1933-1941

Diway lens with a close-up lens, Rotary shutter:

Kodak 616 film (\$0.35), 2-1/2" x 4-1/4"

8 shots

\$3.50



Duo Six-20 Series 2

1934-1937

Kodak Anastigmat 3.5f lens, Compur Rapid shutter.

Kodak 620 film (\$0.30), 60mm x 45mm

8 shots

\$57.50 (\$85 with rangefinder)



Baby Brownie

1934-1941

Design styled by Walter Dorwin Teague. Meniscus lens, Rotary shutter.

Kodak 127 film (\$0.30), 1-5/8" x 2-1/2"

8 shots

\$1



Retina I

1936-1939

Schneider-Kreuznach Retina-Xenar Anastigmat lens, Compur Rapid shutter.

Kodak 135 Daylight Loading Cassette film (\$1.00), 24mm x 36mm

36 shots

\$57.50



Bantam Special Field Camera

1936-1940

Kodak Anastigmat Ektar f2 lens, Compur Rapid shutter.

Kodak 828 film (\$0.40), 28mm x 40mm

8 shots

\$110 with field case.

OTHER MANUFACTURERS



Expo Camera Company Watch Camera

1905-1939

Looks like a pocket watch!

Expo film (\$0.25 roll), 5/8" x 7/8"

25 shots

\$2.50



International Research Corporation Argus A

1936-1941

I.R.C. f4.5 Anastigmat lens, Argus-Ilex Precise shutter.

Kodak 135 Daylight Loading Cassette film (\$1.00), 24mm x 36mm

36 shots

\$12.50

CAMERA GEAR!

Color Filter

Lens filter used to enhance contrast and reduce lens flare.
\$0.75-\$1.50



Lightproof Film Tank and Winding Box

Used to wind reels of film and store them, safe from light exposure.
\$2.75

Metal Tripod

Collapsible metal from 15in. collapsed to 40in. extended.
Comes with leather case.
\$2.75-\$6.50



Negative Album

Folding album holds 100 negatives in glassine sleeves.
\$1

Photograph Album

Used to hold and display photographs.
\$0.25-\$7.50



Self Timer

Pneumatic cylinder and cable release that trips camera shutter after set time period has elapsed.
\$1.25



Optipod

Clamps camera to objects.
\$1.25